



ASI Controls

Pocket PC Interface Software

MobileXpert Features

- Common User Interface.
- Easy to understand screens.
- All configuration information is available.
- Modem Dialing Support.
- ASI Peer-to-Peer or Polling Network access.
- Supports ASIC/2, SINC/2 and SINC/3 product families
- Supports ASIC/1-8x55 product family.
- Wireless 802.11b TCP/IP Connectivity
- No programming language needed.

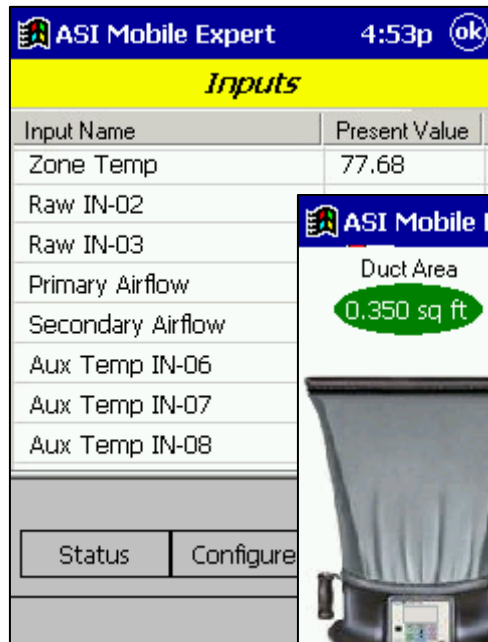
MobileXpert is a lightweight version of the popular ASI Expert. It was developed to run in a "Windows Powered Pocket PC 2003" Personal Data Assistant (PDA) device, such as the HP iPAQ™ Pocket PC.

The software is a portable service tool for use by service personnel, project commissioning staff, and building engineers. It provides users with a simple way to maintain their control systems, including modifying setpoints, testing networks, and commissioning systems.

This innovative application provides unparalleled portability and power to the market of DDC service tools. Screens are developed on the PC and sent to the device with the standard download/synchronization tool provided with the unit. A variety of screens can be built to provide a selection of monitoring and layout options.

MobileXpert is shipped with standard screens for all current ASIC/1-8x55 products, for current ASIC/2 products, and for the SINC/3. These screens provide a generic view of control parameters and allow for setpoint and schedule changes.

A special air-balancing screen for variable air volume terminal (VAV) applications is part of the package. This screen greatly simplifies the air-balancing procedure. Using MobileXpert, you communicate with an ASIC/1-8055. Pressing the "balance" button launches the user interface screen. Here the user sees a reading as measured at the box and is prompted to enter the flow hood reading. Pressing OK submits the calibration factors to the controller and the air-balancing process is complete.



The PC tool used to generate screens is called Builder. With Builder a user can create and edit MobileXpert screens with a simple drag-and-drop editor. Builder allows for screen labeling, icon button definition, .bmp and .jpg graphic import, ASI action invocation, and screen jumping along with other features.



RS-485 Access

To gain access to the ASI communication bus over RS-485 it is necessary to have a RS-485 Serial Compact Flash card and a DB-9 to RJ-12 (curly cord) Adapter for communication with ASIC/1 controllers, or a DB-9 to RS-485 Terminal Block cable for communication with ASIC/2 and SINC/3 controllers.

With a ruggedized Serial I/O Compact Flash Card With the I/O card and RS-232 cable you can communicate immediately with ASIC/2 and SINC/3 controllers, or through a SINC/1-1030 with to ASIC/1 controllers.



Wireless Compact Flash Card ¹

Wireless Access

MobileXpert can connect to ASI EtherLinks using a Wireless 802.11b Compact Flash adapter. It requires at least one Wireless Access Point. MobileXpert makes a wireless connection to the local Ethernet through an ASI Etherlink that connects to the ASI network.

System Requirements

MobileXpert software is designed to work on today's Windows Powered Pocket PC 2003 PDAs.

The minimum interface system should have :

- Pocket PC 2003 powered device, for instance HP iPAQ™
- 240x320 screen resolution
- 1 free CompactFlash Card – type I/II slot
- CF428 Compact Flash RS-485 Adapter
- DB-9 to RJ-12 (curly cord) or DB-9 to RS-485 Terminal Adapter.

The minimum development PC (to run the screen builder program):

- Windows NT/2000/XP running on a Pentium based PC
- Minimum 20MB free hard disk space
- CD-ROM or network access to PC with a CD-ROM for installation purposes.
- Pointing Device. The software makes use of both right and left mouse/trackball or other pointing device buttons.
- At least one spare RS-232 serial communication. Or USB port connected to the ActiveSync cradle for the PDA

How to Order:	Order Number
ASI MobileXpert Software	MobileXpert
Accessories:	Order Number
Compact Flash RS-485 Adapter	CF428
DB-9 to RJ-12 (curly cord) Adapter	CF428-RJ12
DB-9 to RS-485 Terminal Block Cable	CF428-TB

¹ HP , the HP Logo, iPAQ, and the iPAQ Pocket PC product design are trademarks of 2004 Hewlett-Packard Development Company, L.P. in the U.S. and/or other countries.

D-Link is a registered trademark of D-Link Systems, Inc.

Windows Pocket PC, Windows NT/2000/XP are trademarks of Microsoft Corporation . Microsoft and Windows are registered trademarks of Microsoft Corporation in the United States, and/or other countries.