



ASI WebLink Features

- Web-enabled User Interface supports multiple remote users
- Integrated development environment using standard graphic, audio, video formats
- Simple interface for creating powerful, intuitive front ends
- OPC Client application, with OPC tag browser
- Reads ODBC data sources, exports CSV format data
- Includes HVAC graphics library
- Create reports, graphs using current or archived trend data
- Read/Write capability, with real time data updates
- Support for Internet security standards HTTPS/SSL, SHA-1

ASI WebLink User Interface software enables web connectivity for any ASI Controls digital control system.

ASI WebLink displays live control system data and/or historical trend data in a web browser. The browser can be accessed over the Internet, through a LAN or WAN, or on the local PC. Depending on their access level, users can initiate overrides, change schedules, and otherwise control system behavior. WebLink enables real time remote monitoring and control from anywhere on a network.

The WebLink Editor makes building custom screens simple through drag and drop editing, OPC tag browsing, graphics manipulation capabilities, support for scripting and many other features. A built-in Web Server handles data updates using XML. WebLink connects to ASI Controls networks through the ASI LinkOPC Server and supports reads and writes on any network point.

WebLink supports common web graphic, audio and video formats, and includes a library of 3D animated HVAC graphics. Any element on a screen can be automated using JavaScript, giving developers flexibility and power to create functional, feature-rich screens for users. Tool bars, menus, colors and other skin elements can be customized. Graphics can be added, layered, and scripted. Video and audio clips can be embedded on screen.

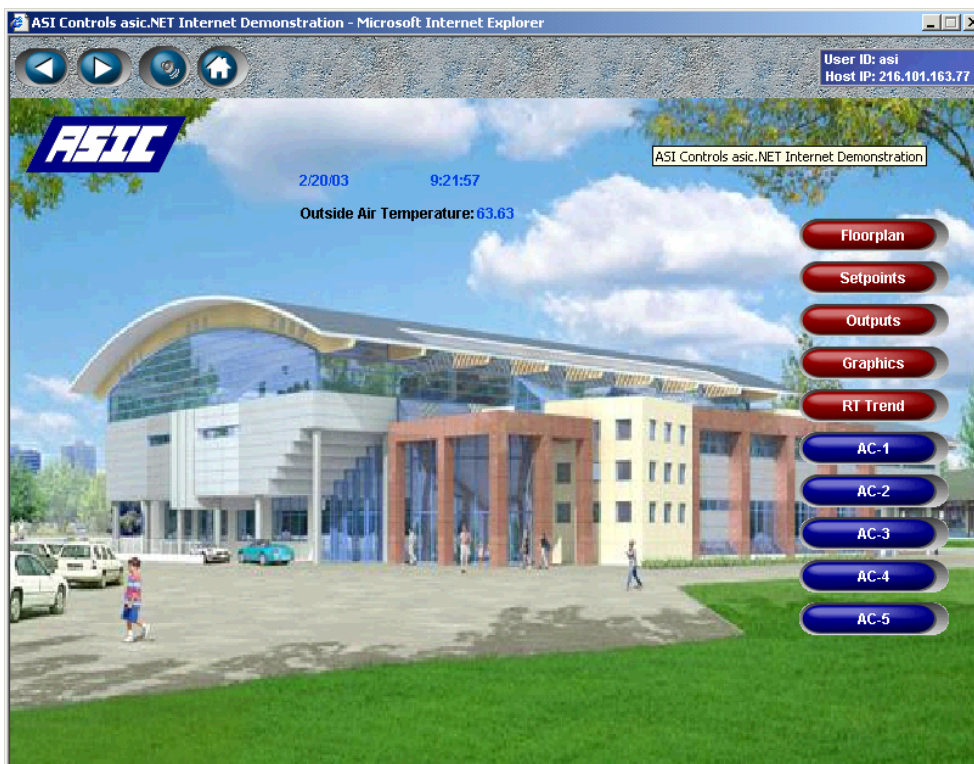
ASI WebLink connects to all ASI products through the ASI LinkOPC Server. Active read/write data can be dragged onto the view by browsing the ASI OPC Server. Dynamic data is updated onscreen in real time, and WebLink supports writing data back to controllers. The ASI LinkOPC Server enables remote connections and does not need to be on the same machine as ASI WebLink.

Data trends can be created for any point on the system. Trended values can be displayed on any WebLink screen. WebLink saves trend data to disk, and provides an interface to report and/or graph the trend data at user-selected time intervals. Custom graphs can be displayed in your web browser, and templates

can be saved for later re-use. Reports data can be exported in CSV format.

ASI WebLink is designed for multiple remote access over LAN, WAN, or Internet. ASI WebLink makes it very easy to develop and deploy feature-rich, compelling and intuitive control system front ends. It requires Internet Explorer 4.0 or later. Setting up the web server requires only a few parameters - IP address, port number and idle timeout.

With logins secured by 160-bit SHA-1 encoding, plus optional support for HTTPS/SSL protocol, ASI WebLink enables secure, convenient access to your systems

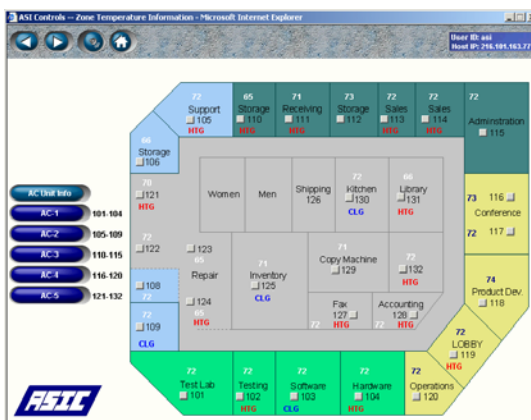




ASI Controls

ASI WebLink

User Interface Software



License

WebLink is licensed both standalone and in a suite combined with ASI Monitor. The WebLink Suite features integrated alarm and event monitoring, with automated delivery of notifications to an individual or group of individuals via email, cell phone, fax (Windows XP Professional only), and/or alphanumeric pager.

WebLink requires a valid LinkOPC (ASI OPC Server) license. A 30-day trial version is available that supports one user connected locally on the PC running the WebLink web server for evaluation.

WebLink pricing is based on the number of simultaneous remote users who can connect. Licenses are available for up to 10 simultaneous remote users. You can upgrade a WebLink license at any time to include a larger number of simultaneous remote connections.

System Requirements

ASI WebLink screens are viewable on a wide variety of platforms supporting the Internet Explorer browser. Development and deployment of WebLink is supported on the Windows 2000 Professional and Windows XP Professional platforms.

The ASI WebLink Server requires:

- Pentium-class Personal Computer (recommended minimum 500 MHz processor, 256MB RAM)
- Windows 2000 Professional or XP Professional
- 25 MB free hard disk space

How to Order:	Order Number
ASI WebLink Software	ASI WebLink

All software is supplied on CD-ROM or Web Download